

# YEAR IN REVIEW

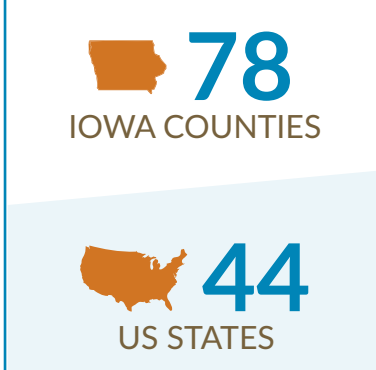
TOTAL SERVED BY THE GROUT MUSEUM DISTRICT: **24,888\***

\*COVID-19 forced the Museum District to shut down from March-May of 2020. The District resumed operations in June 2020, but with reduced hours, 2 facilities closed, Outreach and Museum School paused, reduced programming and limited facility rentals.

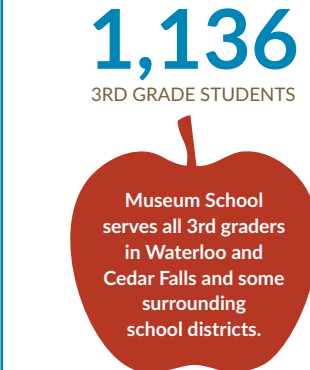
## MEMBERS & VOLUNTEERS



## VISITORS



## MUSEUM SCHOOL



## OUTREACH SERVED



## EXHIBITS & COLLECTIONS



## ORAL HISTORY



## PROGRAMS



## DONATIONS & GRANTS

**\$185,489 DONATIONS**  
29 IN KIND | 296 ANNUAL DONORS | 7 CAPITAL/ENDOWMENT

**\$348,643 GRANTS**  
22 GRANTS AWARDED

## INCOME & EXPENDITURES

TOTAL BUDGET: **\$1,485,720**

